

[Video link recording](#)

MODULE 3 L02

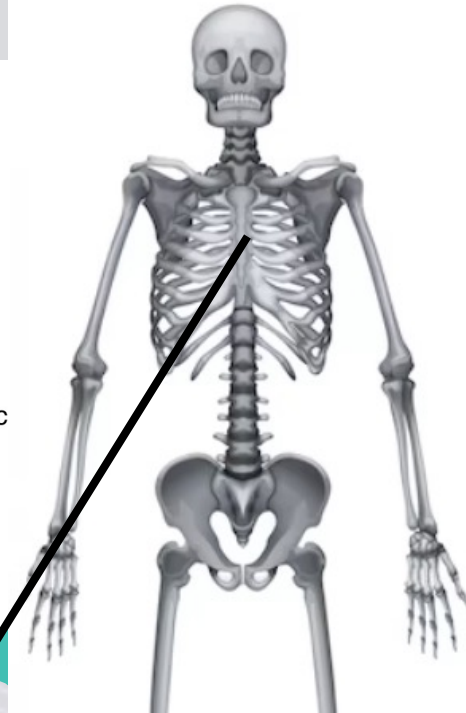
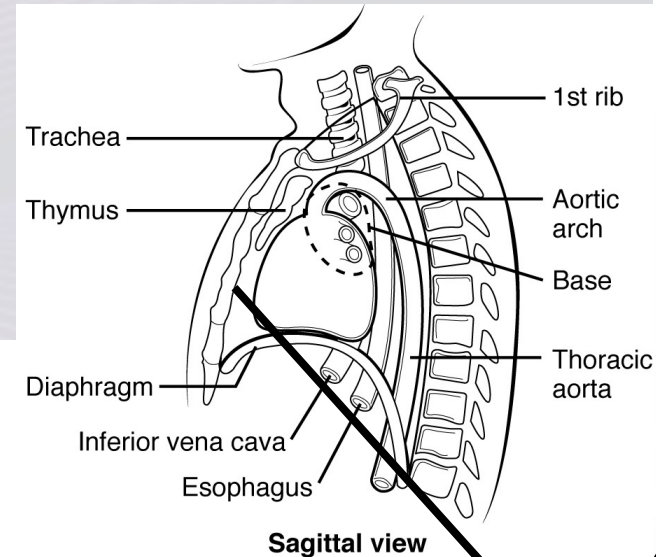
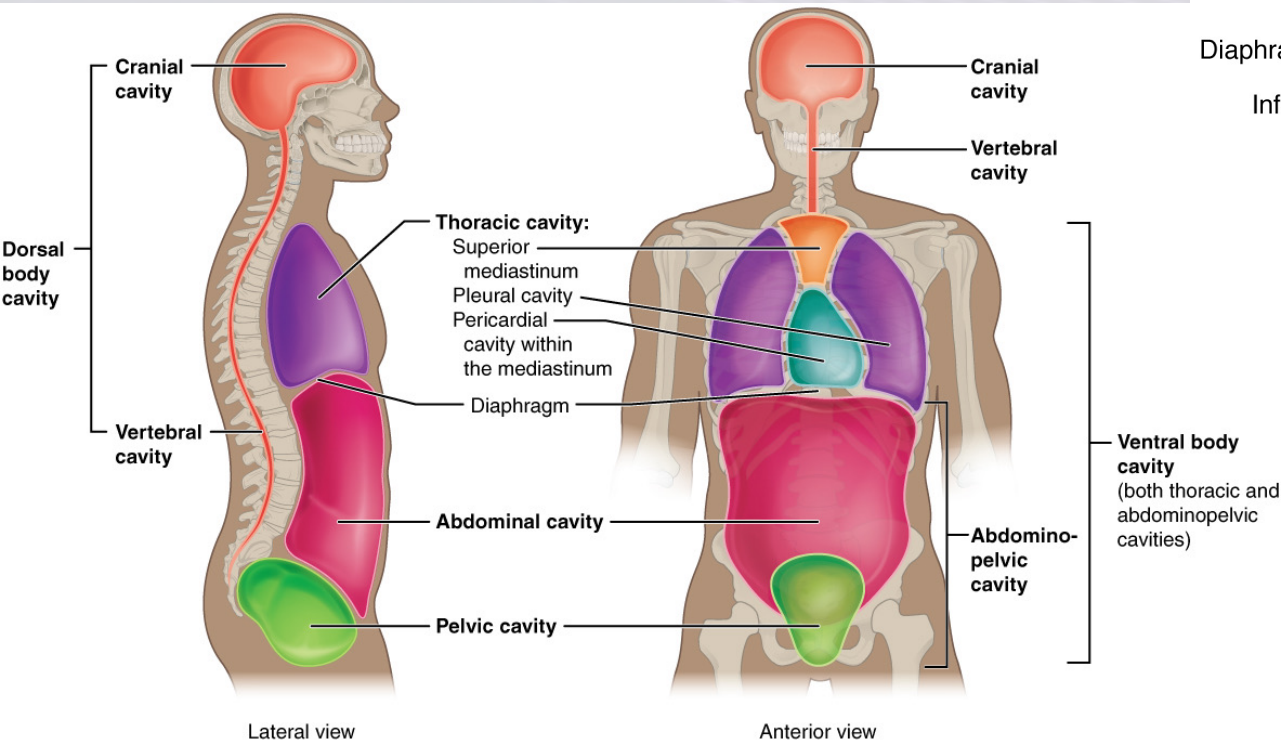
Pericardium

Dr. Lisa Brinn
lbrinn@fiu.edu



2. Heart Location within Pericardial Cavity

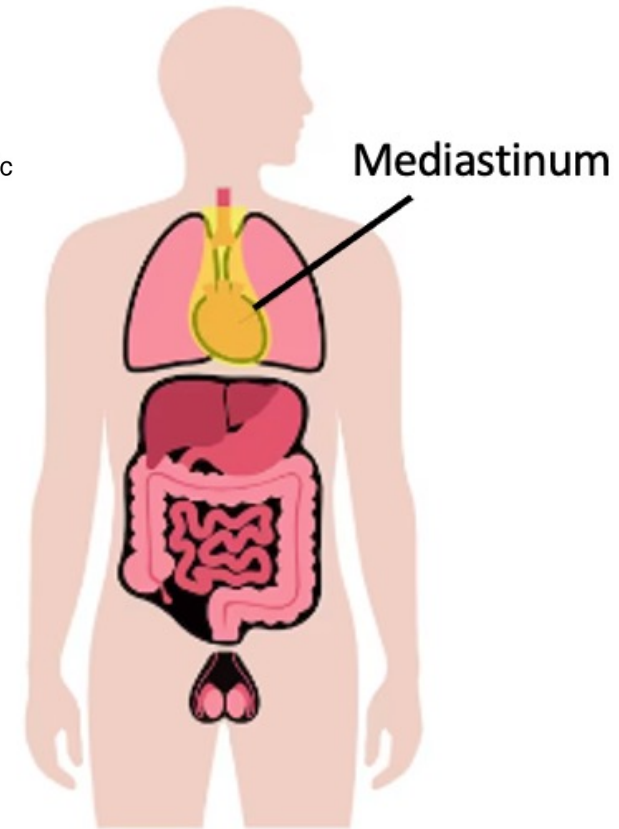
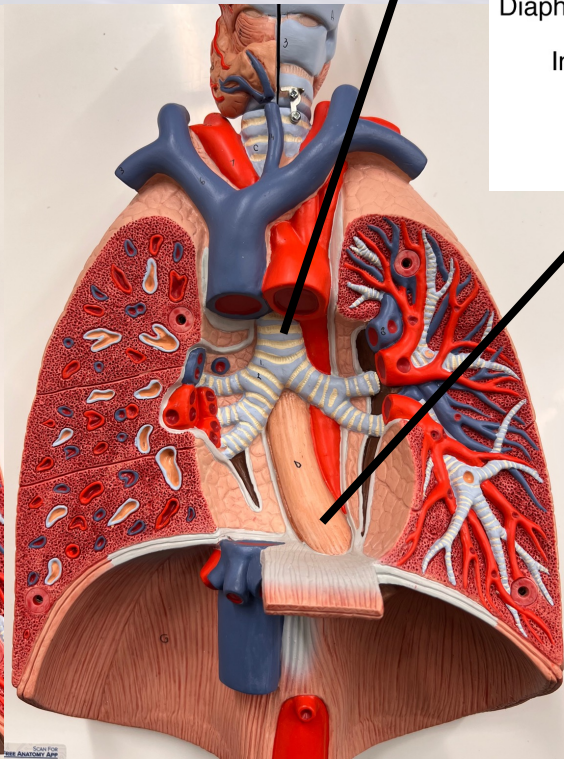
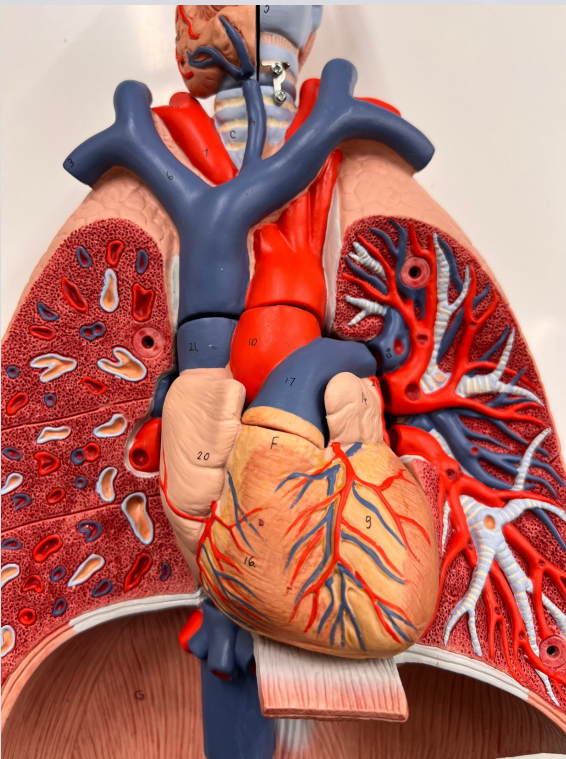
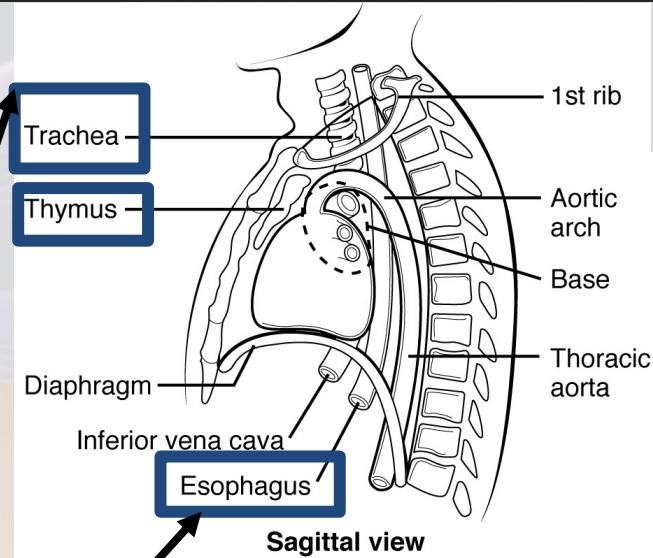
- Heart location:
 - ❖ Anteriorly within chest wall
 - ❖ Directly posterior to sternum
 - In pericardial cavity
 - In the mediastinal cavity
 - Between pleural cavity



Sternum

Mediastinal Cavity

- Also known as mediastinum
- Contains:
 - ❖ Heart
 - ❖ Thymus
 - ❖ Esophagus
 - ❖ Trachea



Pericardium

- Surrounds the heart and lines the pericardial cavity
- Connective tissue composed of two parts:
 - ❖ **Fibrous pericardium**
 - Composed of:
 - Outer most portion of the pericardium
 - Tough, irregularly arranged connective tissue
 - Bind base of heart to mediastinum
 - ❖ **Serous pericardium**
 - Lies deep to fibrous pericardium
 - Composed of two layers:
 - Parietal pericardium
 - Attaches to inner surface of fibrous pericardium
 - Visceral pericardium
 - Also known as epicardium
- Pericardial cavity
 - ❖ Space between visceral and parietal pericardium
 - ❖ Contains pericardial fluid

